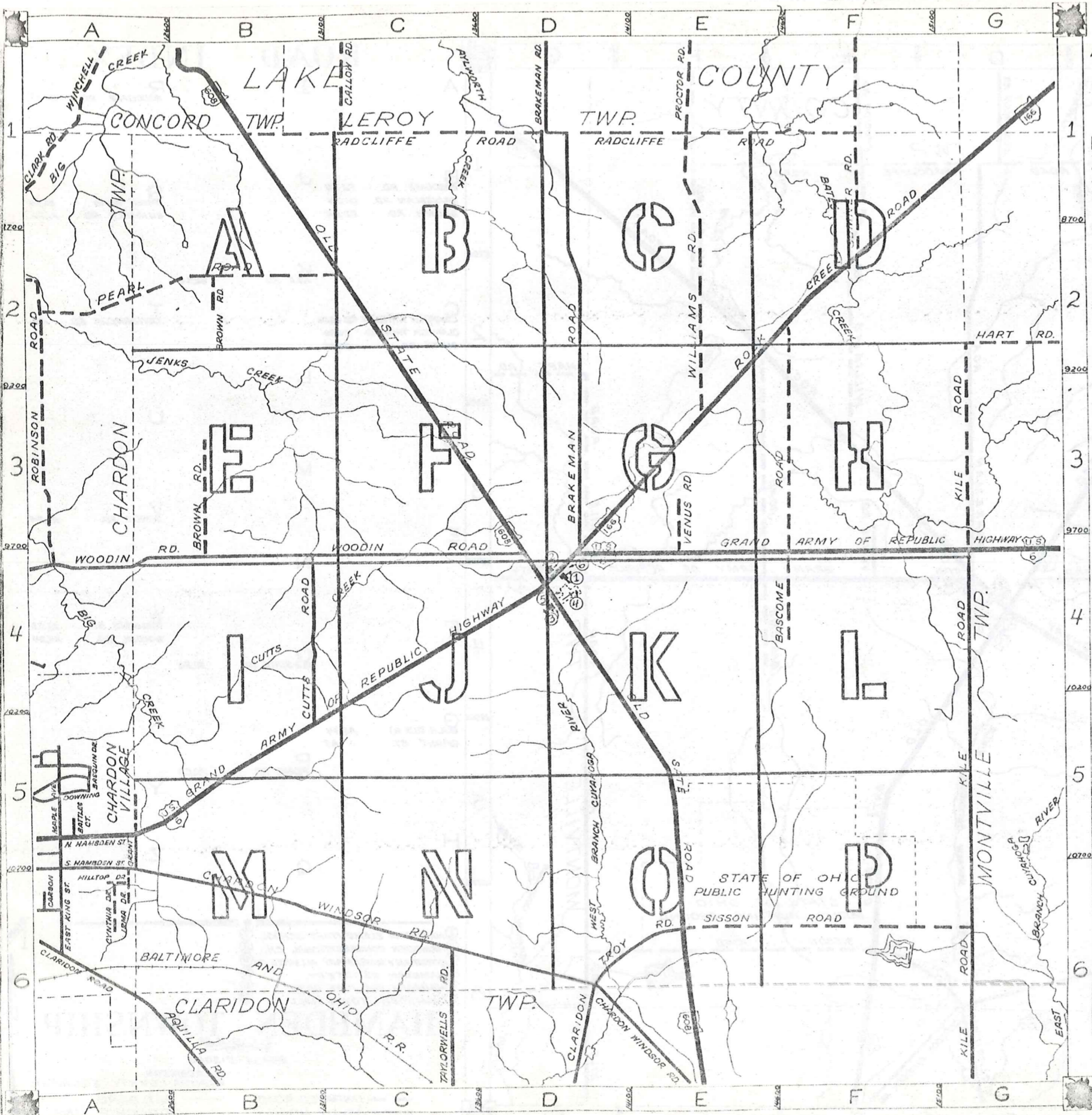


ROAD INDEX



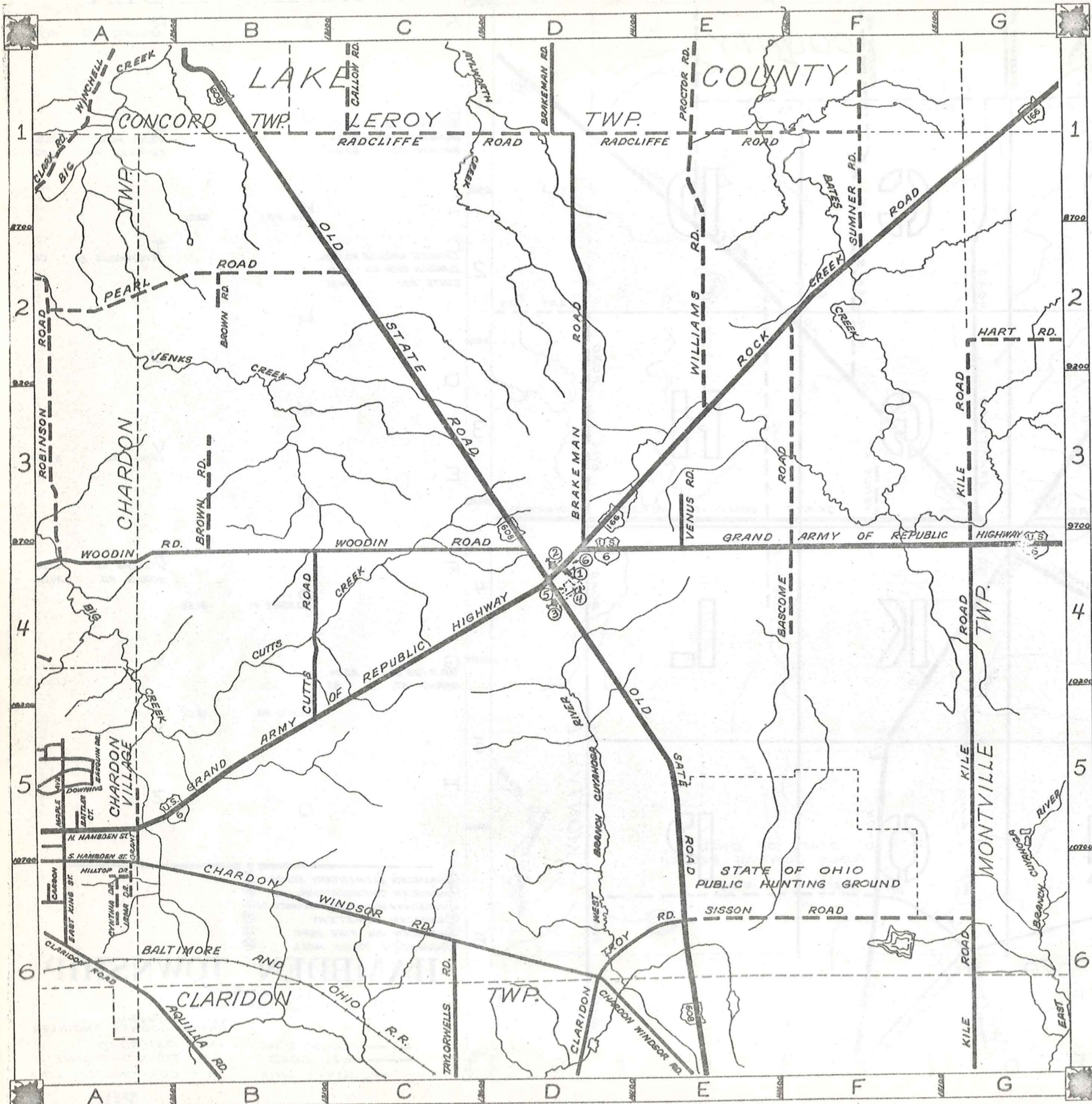
A	I	RADCLIFFE RD. B1,F1
B	J	BASCOME RD. F2,F4 BRAKEMAN RD. D1,D4 BROWN RD. B2,B4
C	K	SISSON ROAD E6,G6 SUMNER RD. F1,F2 KILE RD. G2,G6
D	L	CHARDON WINDSOR RD. A6,D6 CLARIDON TROY RD. D6,E6 CLUTTS RD. B4,B5
E	M	TAYLORWELLS RD. C6
F	N	VENUS RD. E3,E4
G	O	WILLIAMS RD. E1,E3 WOODIN RD. A4,D4
H	P	OLD STATE RD. B1,E6
I	Q	G.A.R. (US 6) A5,G4 GRANT ST. A5
J	R	PEARL RD. A2,C2
K	S	
L	T	
M	U	
N	V	
O	W	
P	X	
Q	Y	
R	Z	

- ① HAMB DEN ELEMENTARY SCHOOL
- ② HAMB DEN CONGREGATIONAL CH.
- ③ CHRISTIAN & MISSIONARY ALLIANCE CH.
- ④ HAMB DEN CEMETERY
- ⑤ HAMB DEN VOL. FIRE DEPT.
- ⑥ HAMB DEN TOWN HALL

HAMB DEN TOWNSHIP

SCALE 1"=2000'
CLYDE POMEROY
GEAUGA COUNTY ENGINEER

- UNPAVED ROAD
- PAVED ROAD
- COUNTY LINE
- RAILROAD
- TOWNSHIP LINE
- CORPORATION LINE



ROAD INDEX

I	RADCLIFFE RD.	B1,F1
J	BASCOMBE RD.	F2,F4
J	BRAKEMAN RD.	D1,D4
J	BROWN RD.	B2,B4
S	SISSON ROAD	E5,G6
S	SUMNER RD.	F1,F2
K	KILE RD.	G2,G6
T	TAYLORWELLS RD.	C6
C	CHARDON WINDSOR RD.	A6,D6
C	CLARIDON TROY RD.	D6,E6
C	CUTTS RD.	B4,B5
D	HART RD.	
V	VENUS RD.	E3,E4
W	WILLIAMS RD.	E1,E3
W	WOODIN RD.	A4,D4
O	OLD STATE RD.	B1,E6
G	G.A.R. (U.S. 6)	A5,G4
G	GRANT ST.	A5
P	PEARL RD.	A2,C2

- ① HAMB DEN ELEMENTARY SCHOOL
- ② HAMB DEN CONGREGATIONAL CH.
- ③ CHRISTIAN & MISSIONARY ALLIANCE CH.
- ④ HAMB DEN CEMETERY
- ⑤ HAMB DEN VOL. FIRE DEPT.
- ⑥ HAMB DEN TOWN HALL

HAMB DEN TOWNSHIP

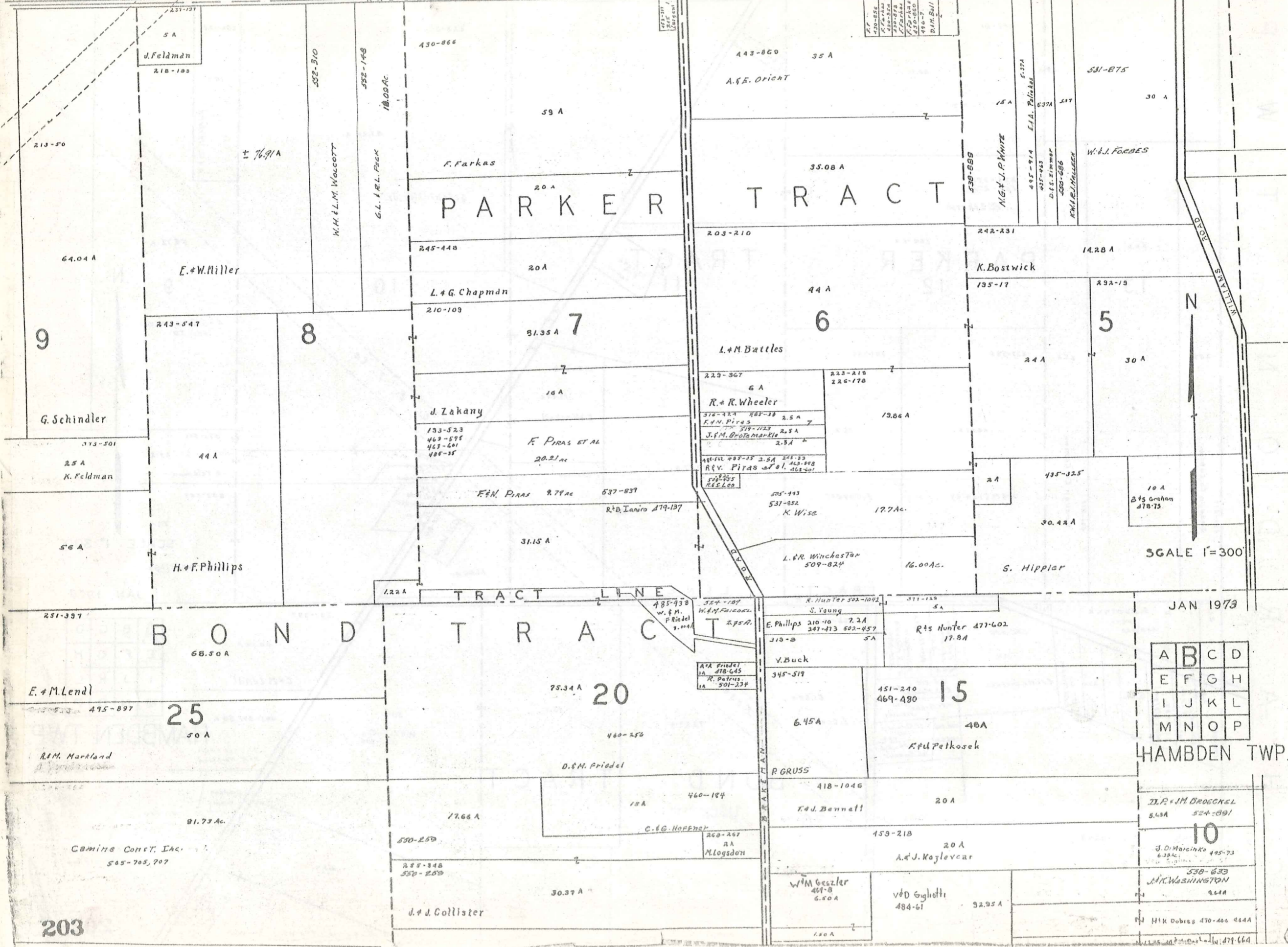
SCALE = 1" = 2000'

O.J. ROBINSON
GEALGA COUNTY ENGINEER

- UNPAVED ROAD
- PAVED ROAD
- RAILROAD
- TOWNSHIP LINE
- COUNTY LINE
- CORPORATION LINE

L A K E I L C O U N T Y

RADCLIFFE ROAD



PARKER TRACT

BOND TRACT

HAMBDEN TWP.

A	B	C	D
E	F	G	H
I	J	K	L
M	N	O	P

10

H K Dobies 470-400 444A

477-664

SCALE 1"=300'

JAN 1973

203

9

8

7

6

5

20

25

15

N



J. Feldman
218-103

E. & W. Miller

G. Schindler

K. Feldman

H. & F. Phillips

E. & M. Lendl

R. M. Markland

Camino Const. Inc.
505-705, 707

430-866

59 A

F. Farkas

20 A

245-448

20 A

L. & G. Chapman

210-109

91.35 A

10 A

J. Zakany

133-523
463-575
463-601
485-35

F. Piras et al
20.21 ac

F. & M. Piras 9.77 ac

505-443
531-852

K. Wise

17.7 ac

31.15 A

L. & R. Winchester
509-824

16.00 ac

S. Hipplar

443-860

35 A

A. & E. Orient

35.08 A

203-210

44 A

L. & M. Battles

229-367

6 A

R. & R. Wheeler

316-424 483-38

F. & M. Piras 2.5 A

J. & M. Brotamarkie 2.5 A

J. & M. Brotamarkie 2.5 A

485-442 485-45 2.5 A

R. V. Piras 463-598

RES. Leo

223-218
226-170

13.86 A

15 A

M. & J. P. White

617A

E. J. A. Pollocke

637A

495-914

435-943

D. S. Zimmer

538-686

M. & J. H. Haller

531-875

30 A

W. & L. Forbes

14.28 A

K. Bostwick

135-17

292-19

24 A

30 A

435-325

30.42 A

10 A

B. & S. Graham
478-75

A. A. Friedel
1A 418-645
R. Patrus
1A 501-234

485-438
W. & M. Friedel
9.00 ac

524-187
W. & M. Friedel
2.75 A

R. Hunter 502-1092

S. Young

E. Phillips 210-70 7.2 A

247-473 502-457

313-B 5A

V. Buck

345-517

6.45 A

151-240
469-480

48 A

K. & L. Petkosek

R. GRUSS

418-1046

20 A

K. J. Bennett

459-218

20 A

A. & J. Koglycar

W. M. Geszler
461-B
6.50 A

V. D. Gagliotti
484-61

92.95 A

J. P. & J. M. Brocckel
5.43 A 524-891

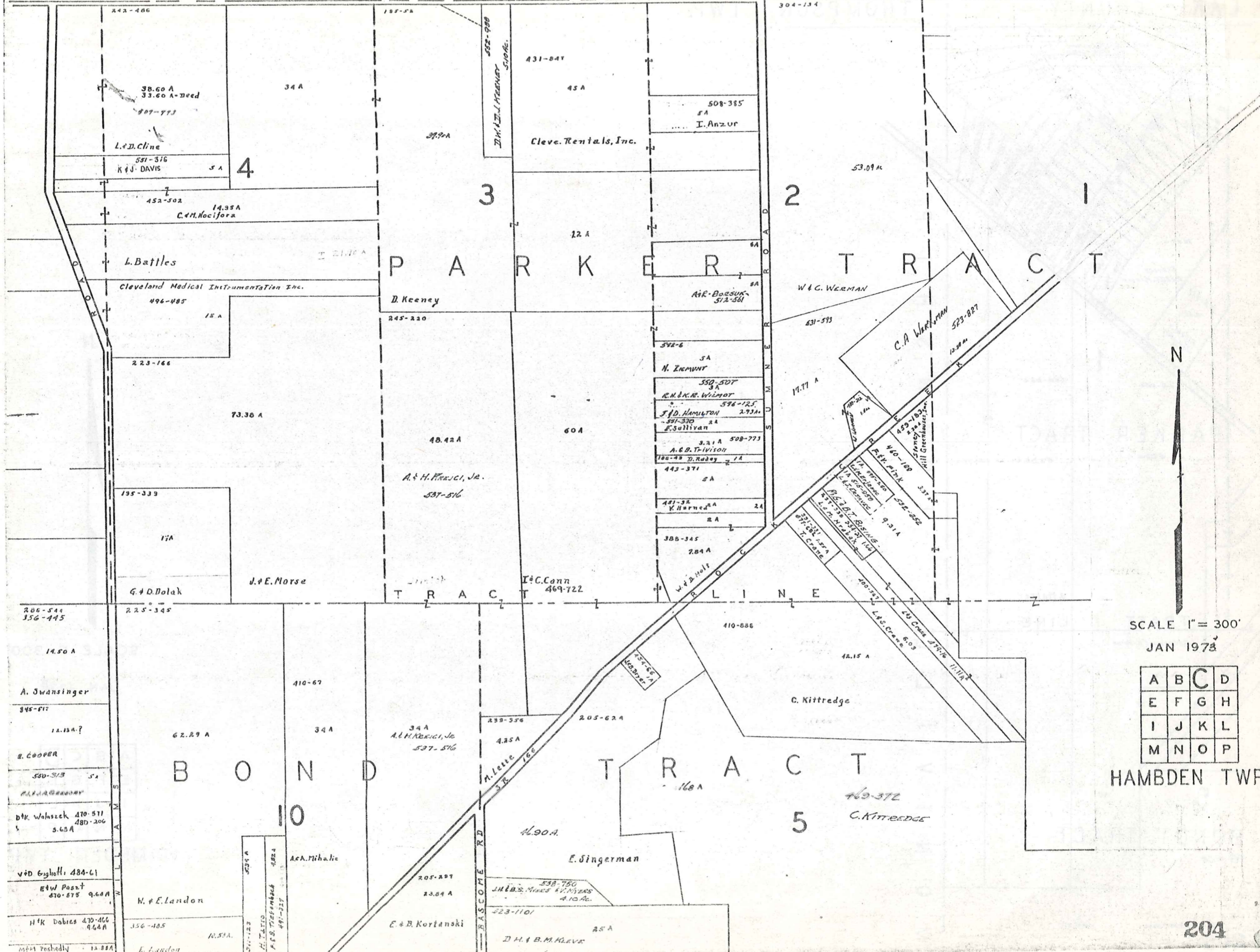
J. D. Mancino 495-73
6.38 ac

538-633
J. K. Washington
9.64 A

H. K. Dobies 470-400 444A

477-664

L A K E C O U N T Y



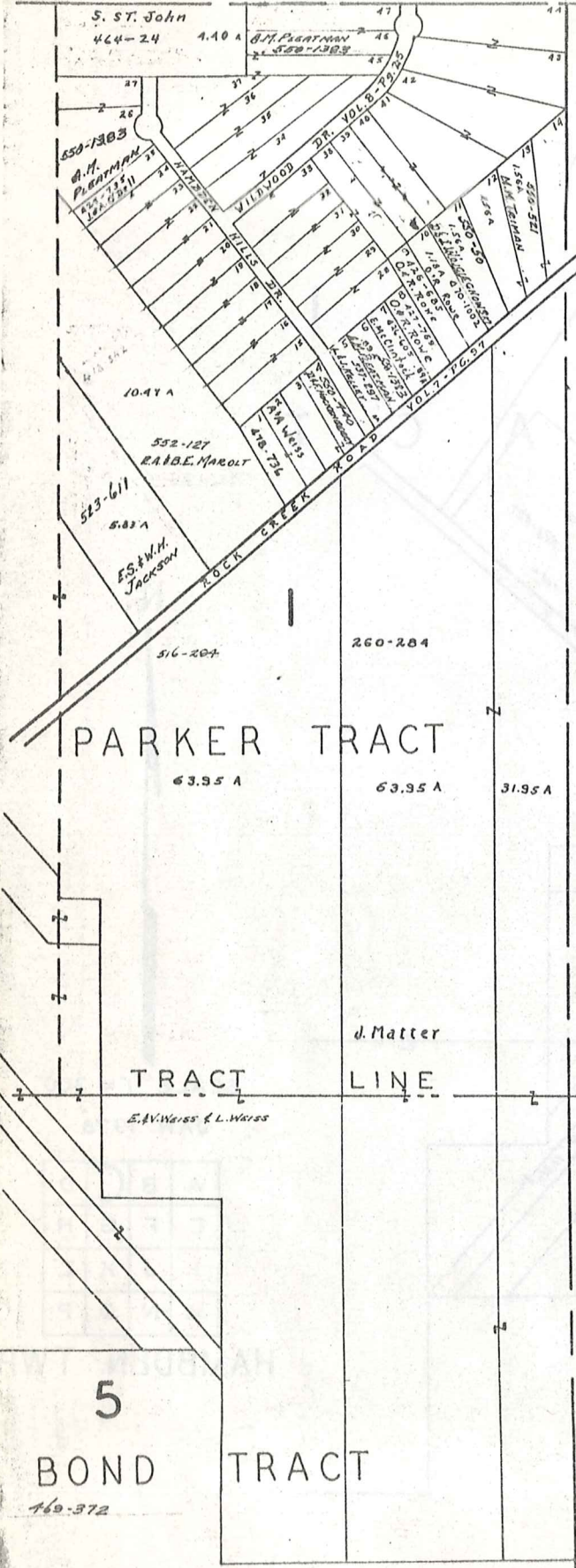
SCALE 1" = 300'
JAN 1973

A	B	C	D
E	F	G	H
I	J	K	L
M	N	O	P

HAMB DEN TWP

LAKE COUNTY

THOMPSON TWP.



M O N T V I L L E T O W N S H I P



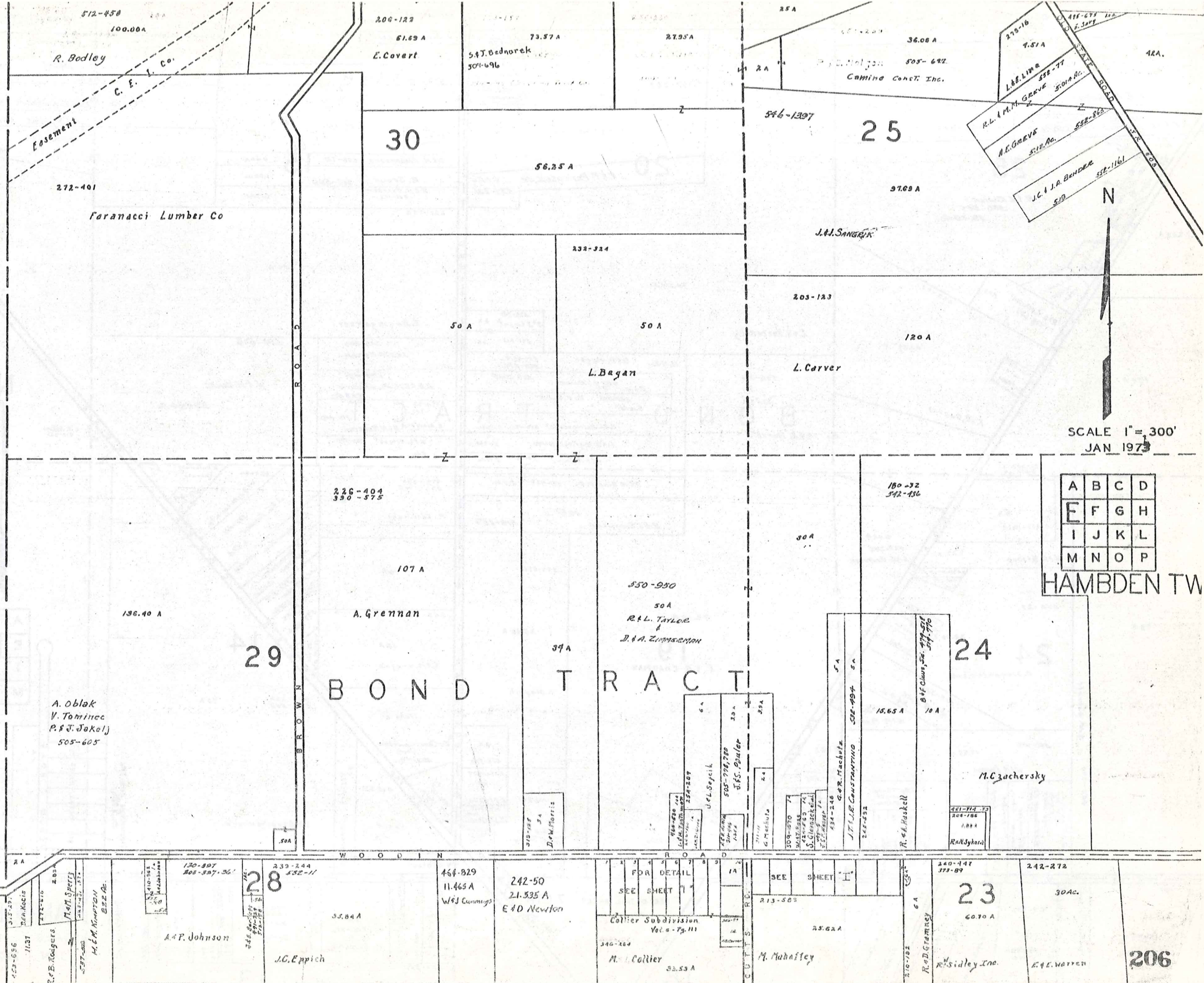
SCALE 1" = 300'

JAN 1973

A	B	C	D
E	F	G	H
I	J	K	L
M	N	O	P

HAMBDEN TWP.

C H A R D O N
T O W N S H I P



512-450
100.00A
R. Bodley
C. E. L. Co.
Easement

272-401
Faranacci Lumber Co

200-122
61.69 A
E. Covert

73.57 A
54 J. Bednarek
505-696

27.95 A

36.08 A
505-692
Camino Const. Inc.

279-16
7.57 A
L.E. LINA
R.L. M.M. GRAVE
552-77
5018 Ac.
M.C. GRAVE
512 Ac.
552-812
J.C. J.A. BENDER
519
552-1161

30

56.25 A

25

97.69 A

J.H. Samsick

232-224

203-123

50 A

50 A

120 A

L. Bagan

L. Carver

SCALE 1" = 300'
JAN 1973

A	B	C	D
E	F	G	H
I	J	K	L
M	N	O	P

HAMB DEN TW

226-404
390-575

107 A

A. Grennan

180-32
342-456

30 A

350-950

50 A

R.L. Taylor
J.A. Zimmerman

29

196.40 A

A. Oblak
V. Tominec
P. J. Jakolj
505-605

39 A

B O N D T R A C T

24

15.65 A

10 A

M.C. Zuchersky

28

130-397
308-307.26'

233-244
552-11

35.84 A

A.P. Johnson

J.C. Eppich

464-829
11.465 A

W.J. Cummings

242-50
21.535 A

E & D Newton

FOR DETAIL
SEE SHEET I

Collier Subdivision
Vol. 6 - Pg. 111

M. Collier
33.59 A

SEE SHEET I

213-503

M. Mahaffey

23

240-147
373-09

60.70 A

R. D. Gentry
R. Sidley Inc.

242-272

30Ac.

206

F. E. Covert

453-656
1137
R. B. Taugers
M. M. Sperry
442-43, 43A, 43B
537-400
H. E. M. KIMPTON
B22 Ac.

210-561
210-562
210-563
210-564
210-565
210-566
210-567
210-568
210-569
210-570
210-571
210-572
210-573
210-574
210-575
210-576
210-577
210-578
210-579
210-580
210-581
210-582
210-583
210-584
210-585
210-586
210-587
210-588
210-589
210-590
210-591
210-592
210-593
210-594
210-595
210-596
210-597
210-598
210-599
210-600

210-561
210-562
210-563
210-564
210-565
210-566
210-567
210-568
210-569
210-570
210-571
210-572
210-573
210-574
210-575
210-576
210-577
210-578
210-579
210-580
210-581
210-582
210-583
210-584
210-585
210-586
210-587
210-588
210-589
210-590
210-591
210-592
210-593
210-594
210-595
210-596
210-597
210-598
210-599
210-600

210-561
210-562
210-563
210-564
210-565
210-566
210-567
210-568
210-569
210-570
210-571
210-572
210-573
210-574
210-575
210-576
210-577
210-578
210-579
210-580
210-581
210-582
210-583
210-584
210-585
210-586
210-587
210-588
210-589
210-590
210-591
210-592
210-593
210-594
210-595
210-596
210-597
210-598
210-599
210-600

210-561
210-562
210-563
210-564
210-565
210-566
210-567
210-568
210-569
210-570
210-571
210-572
210-573
210-574
210-575
210-576
210-577
210-578
210-579
210-580
210-581
210-582
210-583
210-584
210-585
210-586
210-587
210-588
210-589
210-590
210-591
210-592
210-593
210-594
210-595
210-596
210-597
210-598
210-599
210-600

210-561
210-562
210-563
210-564
210-565
210-566
210-567
210-568
210-569
210-570
210-571
210-572
210-573
210-574
210-575
210-576
210-577
210-578
210-579
210-580
210-581
210-582
210-583
210-584
210-585
210-586
210-587
210-588
210-589
210-590
210-591
210-592
210-593
210-594
210-595
210-596
210-597
210-598
210-599
210-600

210-561
210-562
210-563
210-564
210-565
210-566
210-567
210-568
210-569
210-570
210-571
210-572
210-573
210-574
210-575
210-576
210-577
210-578
210-579
210-580
210-581
210-582
210-583
210-584
210-585
210-586
210-587
210-588
210-589
210-590
210-591
210-592
210-593
210-594
210-595
210-596
210-597
210-598
210-599
210-600

210-561
210-562
210-563
210-564
210-565
210-566
210-567
210-568
210-569
210-570
210-571
210-572
210-573
210-574
210-575
210-576
210-577
210-578
210-579
210-580
210-581
210-582
210-583
210-584
210-585
210-586
210-587
210-588
210-589
210-590
210-591
210-592
210-593
210-594
210-595
210-596
210-597
210-598
210-599
210-600

210-561
210-562
210-563
210-564
210-565
210-566
210-567
210-568
210-569
210-570
210-571
210-572
210-573
210-574
210-575
210-576
210-577
210-578
210-579
210-580
210-581
210-582
210-583
210-584
210-585
210-586
210-587
210-588
210-589
210-590
210-591
210-592
210-593
210-594
210-595
210-596
210-597
210-598
210-599
210-600

210-561
210-562
210-563
210-564
210-565
210-566
210-567
210-568
210-569
210-570
210-571
210-572
210-573
210-574
210-575
210-576
210-577
210-578
210-579
210-580
210-581
210-582
210-583
210-584
210-585
210-586
210-587
210-588
210-589
210-590
210-591
210-592
210-593
210-594
210-595
210-596
210-597
210-598
210-599
210-600

210-561
210-562
210-563
210-564
210-565
210-566
210-567
210-568
210-569
210-570
210-571
210-572
210-573
210-574
210-575
210-576
210-577
210-578
210-579
210-580
210-581
210-582
210-583
210-584
210-585
210-586
210-587
210-588
210-589
210-590
210-591
210-592
210-593
210-594
210-595
210-596
210-597
210-598
210-599
210-600

210-561
210-562
210-563
210-564
210-565
210-566
210-567
210-568
210-569
210-570
210-571
210-572
210-573
210-574
210-575
210-576
210-577
210-578
210-579
210-580
210-581
210-582
210-583
210-584
210-585
210-586
210-587
210-588
210-589
210-590
210-591
210-592
210-593
210-594
210-595
210-596
210-597
210-598
210-599
210-600

210-561
210-562
210-563
210-564
210-565
210-566
210-567
210-568
210-569
210-570
210-571
210-572
210-573
210-574
210-575
210-576
210-577
210-578
210-579
210-580
210-581
210-582
210-583
210-584
210-585
210-586
210-587
210-588
210-589
210-590
210-591
210-592
210-593
210-594
210-595
210-596
210-597
210-598
210-599
210-600

210-561
210-562
210-563
210-564
210-565
210-566
210-567
210-568
210-569
210-570
210-571
210-572
210-573
210-574
210-575
210-576
210-577
210-578
210-579
210-580
210-581
210-582
210-583
210-584
210-585
210-586
210-587
210-588
210-589
210-590
210-591
210-592
210-593
210-594
210-595
210-596
210-597
210-598
210-599
210-600

210-561
210-562
210-563
210-564
210-565
210-566
210-567
210-568
210-569
210-570
210-571
210-572
210-573
210-574
210-575
210-576
210-577
210-578
210-579
210-580
210-581
210-582
210-583
210-584
210-585
210-586
210-587
210-588
210-589
210-590
210-591
210-592
210-593
210-594
210-595
210-596
210-597
210-598
210-599
210-600

210-561
210-562
210-563
210-564
210-565
210-566
210-567
210-568
210-569
210-570
210-571
210-572
210-573
210-574
210-575
210-576
210-577
210-578
210-579
210-580
210-581
210-582
210-583
210-584
210-585
210-586
210-587
210-588
210-589
210-590
210-591
210-592
210-593
210-594
210-595
210-596
210-597
210-598
210-599
210-600

210-561
210-562
210-563
210-564
210-565
210-566
210-567
210-568
210-569
210-570
210-571
210-572
210-573
210-574
210-575
210-576
210-577
210-578
210-579
210-580
210-581
210-582
210-583
210-584
210-585
210-586
210-587
210-588
210-589
210-590
210-591
210-592
210-593
210-594
210-595
210-596
210-597
210-598
210-599
210-600

210-561
210-562
210-563
210-564
210-565
210-566
210-567
210-568
210-569
210-570
210-571
210-572
210-573
210-574
210-575
210-576
210-577
210-578
210-579
210-580
210-581
210-582
210-583
210-584
210-585
210-586
210-587
210-588
210-589
210-590
210-591
210-592
210-593
210-594
210-595
210-596
210-597
210-598
210-599
210-600

210-561
210-562
210-563
210-564
210-565
210-566
210-567
210-568
210-569
210-570
210-571
210-572
210-573
210-574
210-575
210-576
210-577
210-578
210-579
210-580
210-581
210-582
210-583
210-584
210-585
210-586
210-587
210-588
210-589
210-590
210-591
210-592
210-593
210-594
210-595
210-596
210-597
210-598
210-599
210-600

210-561
210-562
210-563
210-564
210-565
210-566
210-567
210-568
210-569
210-570
210-571
210-572
210-573
210-574
210-575
210-576
210-577
210-578
210-579
210-580
210-581
210-582
210-583
210-584
210-585
210-586
210-587
210-588
210-589
210-590
210-591
210-592
210-593
210-594
210-595
210-596
210-597
210-598
210-599
210-600

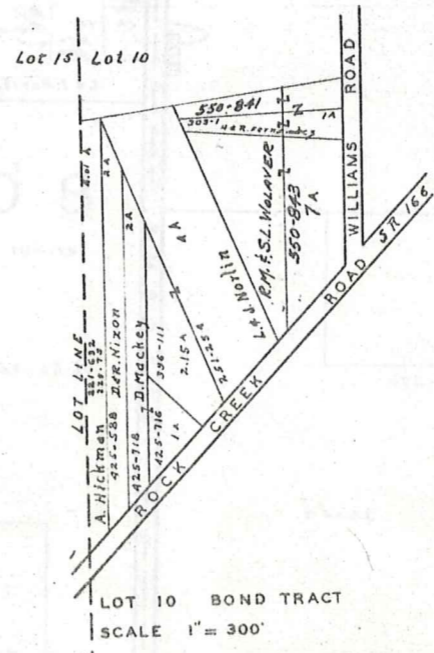
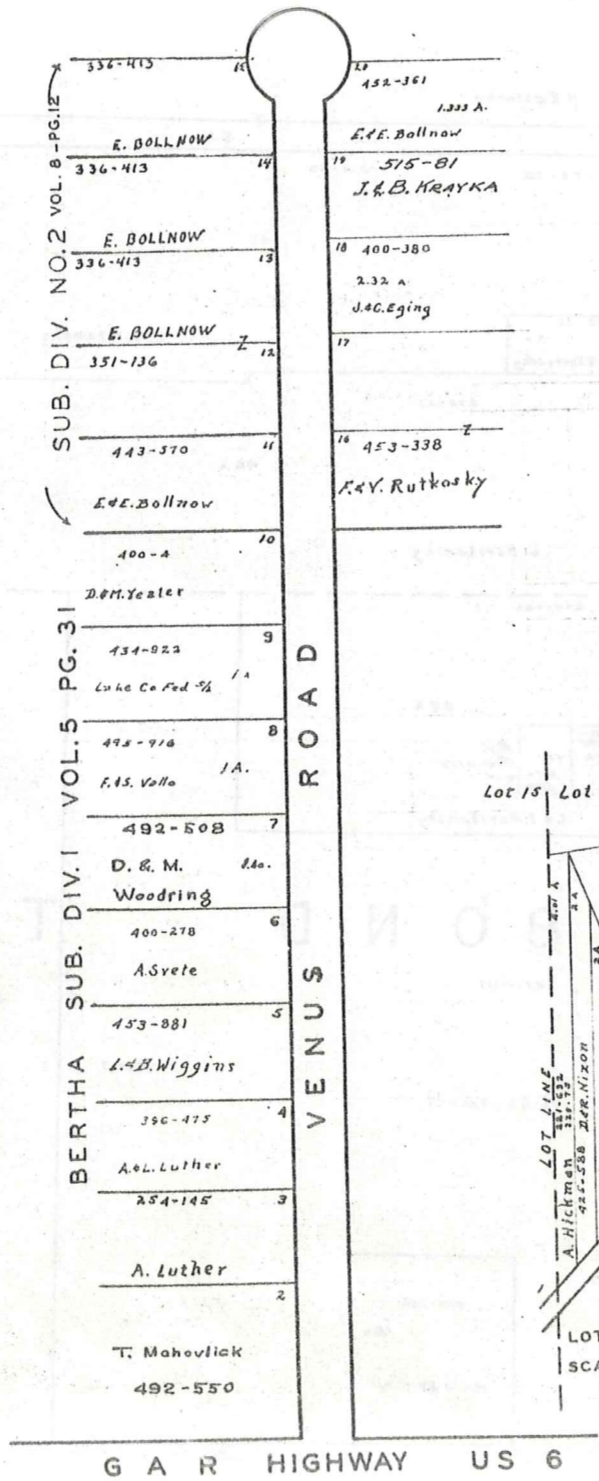
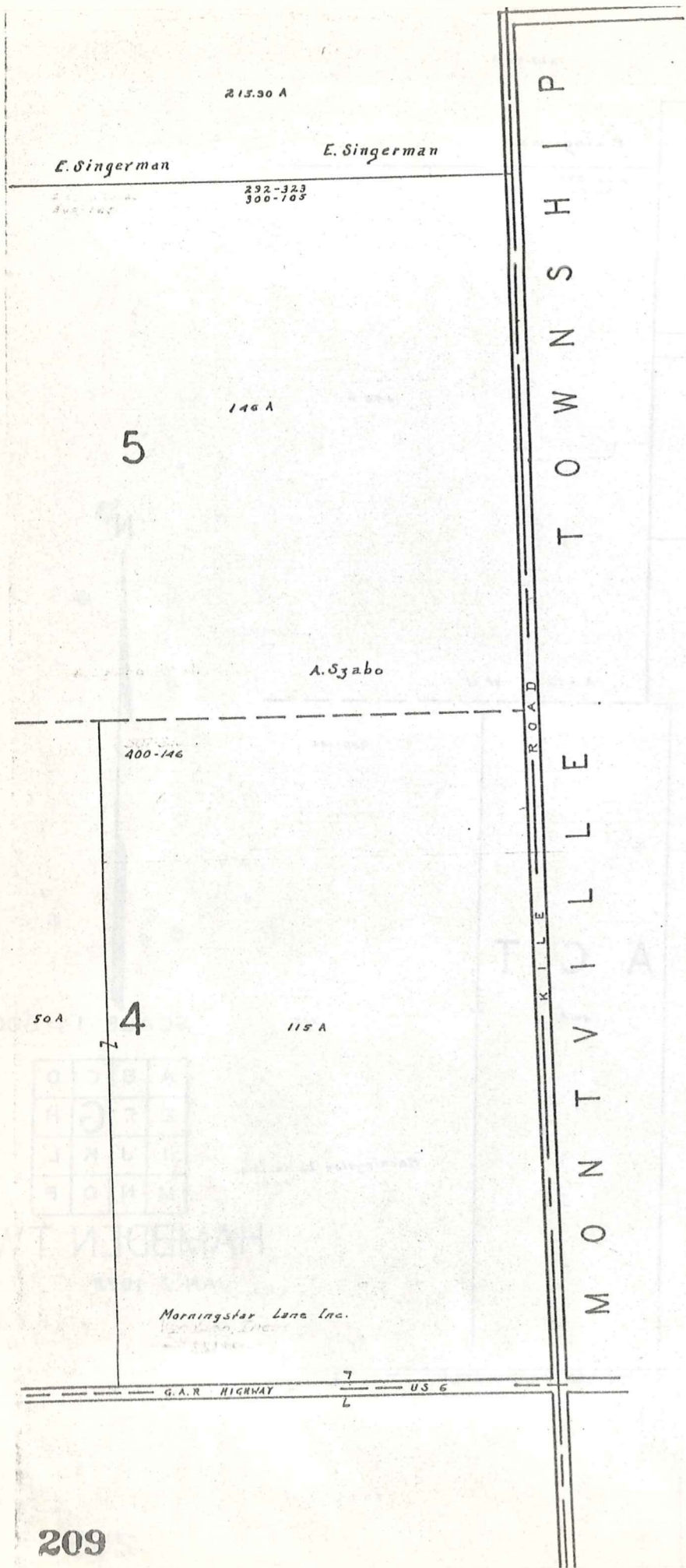
210-561
210-562
210-563
210-564
210-565
210-566
210-567
210-568
210-569
210-570
210-571
210-572
210-573
210-574
210-575
210-576
210-577
210-578
210-579
210-580
210-581
210-582
210-583
210-584
210-585
210-586
210-587
210-588
210-589
210-590
210-591
210-592
210-593
210-594
210-595
210-596
210-597
210-598
210-599
210-600

210-561
210-562
210-563
210-564
210-565
210-566
210-567
210-568
210-569
210-570
210-571
210-572
210-573
210-574
210-575
210-576
210-577
210-578
210-579
210-580
210-581
210-582
210-583
210-584
210-585
210-586
210-587
210-588
210-589
210-590
210-591
210-592
210-593
210-594
210-595
210-596
210-597
210-598
210-599
210-600

210-561
210-562
210-563
210-564
210-565
210-566
210-567
210-568
210-569
210-570
210-571
210-572
210-573
210-574
210-575
210-576
210-577
210-578
210-579
210-580
210-581
210-582
210-583
210-584
210-585
210-586
210-587
210-588
210-589
210-590
210-591
210-592
210-593
210-594
210-595
210-596
210-597
210-598
210-599
210-600

210-561
210-562
210-563
210-564
210-565
210-566
210-567
210-568
210-569
210-570
210-571
210-572
210-573
210-574
210-575
210-576
210-577
210-578
210-579
210-580
210-581
210-582
210-583
210-584
210-585
210-586
210-587
210-588
210-589
210-590
210-591
210-592
210-593
210-594
210-595
210-596
210-597
210-598
210-599
210-600

210-561
210-562
210-563
210-564
210-565
210-566
210-567
210-568
210-569
210-570
210-571
210-572
210-573
210-574
210-575
210-576
210-577
210-578
210-



N
SCALE 1" = 300
JAN 7, 1973

A	B	C	D
E	F	G	H
I	J	K	L
M	N	O	P

HAMB DEN TWP

LOT 9 & 14 BOND TR.
SCALE 1" = 100'

WOODIN ROAD

US 6

SEE DETAIL SHEET 7 CTR

18

13

8

BOND TRACT

12

7

17

SCALE 1" = 300'
JAN 1973

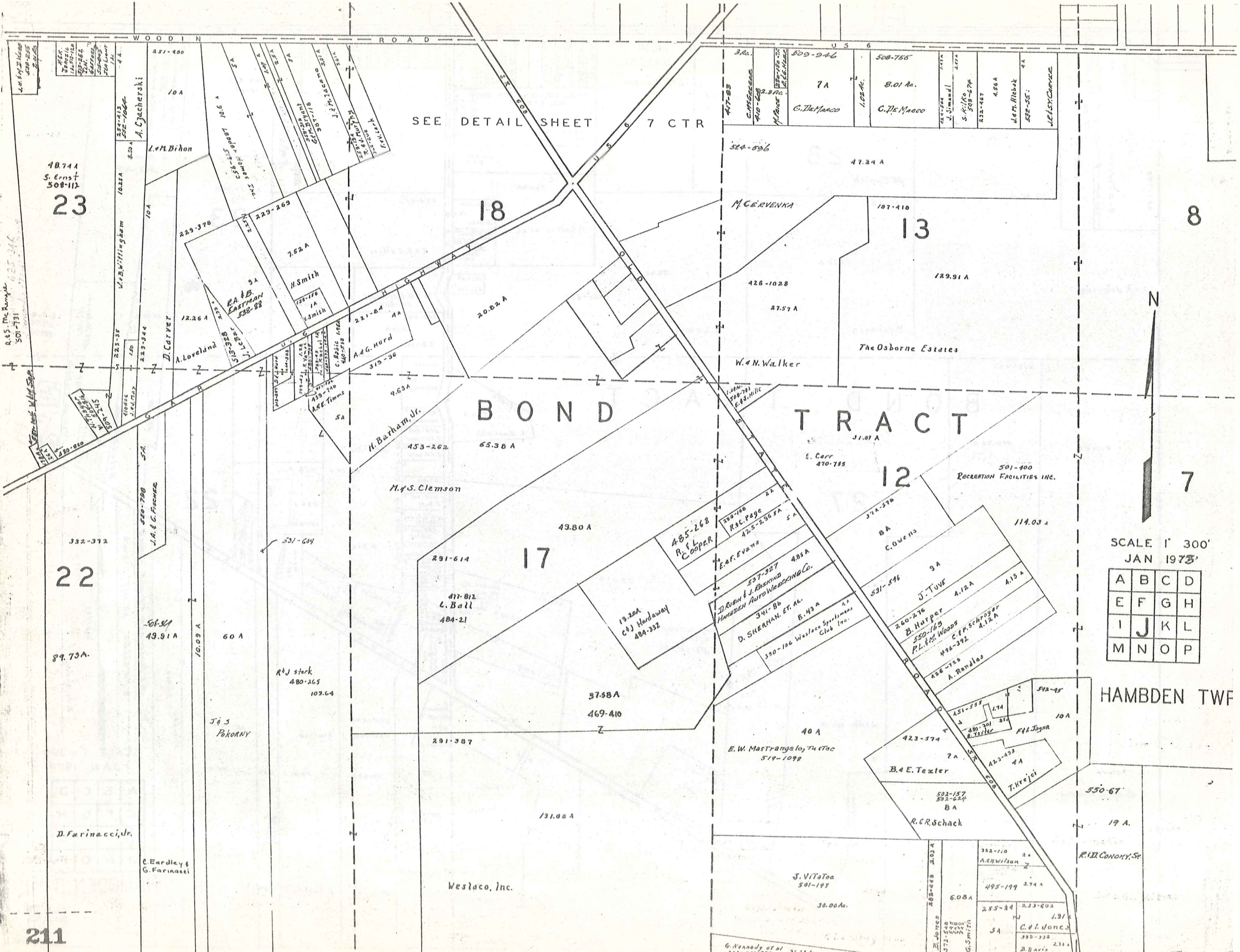
A	B	C	D
E	F	G	H
I	J	K	L
M	N	O	P

HAMB DEN TWF

550-67

19 A.

R. D. CONROY, Sr.



48.741
S. Ernst
508-112
23

332-372
22

211

R. S. McRae
501-731

89.73A.

D. Farinacci, Jr.

C. Eardley &
G. Farinacci

J & S
Pokoany

R & J stark
480-265
103.64

M. S. Clemson

Weslaco, Inc.

H. Barham, Jr.

453-262
65.38 A

291-387

131.08 A

49.80 A

291-614
477-812
L. Ball
484-21

37.58 A
469-410

19.20A
C. J. Hardaway
484-332

485-268
R. & L. COOPER

537-327
D. Rubin & J. Roskind
HAMB DEN AUTO WRECKING CO.

341-BB
D. SHERMAN, ET AL.

390-186
Westlaco Sportsmens
Club Inc.

40 A
E. W. Mastrangelo, Trustee
519-1098

J. VitaToa
501-147
38.00Ac.

G. Kennedy et al
373-523/524 36.61A.

M. CERVENKA

426-1028
27.57 A

W. N. Walker

E. Carr
470-785

The Osborne Estates

501-400
RECREATION FACILITIES INC.

114.03 A

J. TUVE
260-276
A.12A
A.15 A

B. Hupper
550-163
P.L. & M. Woods
496-392
A.12A

A. Ranulas

B. E. Texter

502-157
502-624
B A

R. E. Schack

6.08A

C. L. Jones
393-332
2.31A
B. Davis

3A.
C. Fitzgerald
410-608
M. Pace
487-120-77
W. E. Hesse

509-946
7A
C. DeMarco

508-755
8.01 Ac.
C. DeMarco

1.02 Ac.
J. J. J. J. J.

4.56A
J. M. Ribick
532-551

J. L. S. C. J. S. C.

251-480
10A
A. Czacherski

10.5 A
L. M. Bihon

229-378
229-263
7.62 A
H. Smith

12.26 A
A. Loveland

221-84
4A
A. G. Hurd

315-36
9.63A

20.82 A

221-84
4A
A. G. Hurd

187-410
47.24 A

524-896

426-1028
27.57 A

187-410
47.24 A

129.91 A

1.02 Ac.
J. J. J. J. J.

4.56A
J. M. Ribick
532-551

J. L. S. C. J. S. C.

223-38
140
223-344
D. Carver

10A
A. Czacherski

229-378
229-263
7.62 A
H. Smith

12.26 A
A. Loveland

221-84
4A
A. G. Hurd

315-36
9.63A

20.82 A

221-84
4A
A. G. Hurd

187-410
47.24 A

524-896

426-1028
27.57 A

187-410
47.24 A

129.91 A

1.02 Ac.
J. J. J. J. J.

4.56A
J. M. Ribick
532-551

J. L. S. C. J. S. C.

223-38
140
223-344
D. Carver

10A
A. Czacherski

229-378
229-263
7.62 A
H. Smith

12.26 A
A. Loveland

221-84
4A
A. G. Hurd

315-36
9.63A

20.82 A

221-84
4A
A. G. Hurd

187-410
47.24 A

524-896

426-1028
27.57 A

187-410
47.24 A

129.91 A

1.02 Ac.
J. J. J. J. J.

4.56A
J. M. Ribick
532-551

J. L. S. C. J. S. C.

223-38
140
223-344
D. Carver

10A
A. Czacherski

229-378
229-263
7.62 A
H. Smith

12.26 A
A. Loveland

221-84
4A
A. G. Hurd

315-36
9.63A

20.82 A

221-84
4A
A. G. Hurd

187-410
47.24 A

524-896

426-1028
27.57 A

187-410
47.24 A

129.91 A

1.02 Ac.
J. J. J. J. J.

4.56A
J. M. Ribick
532-551

J. L. S. C. J. S. C.

223-38
140
223-344
D. Carver

10A
A. Czacherski

229-378
229-263
7.62 A
H. Smith

12.26 A
A. Loveland

221-84
4A
A. G. Hurd

315-36
9.63A

20.82 A

221-84
4A
A. G. Hurd

187-410
47.24 A

524-896

426-1028
27.57 A

187-410
47.24 A

129.91 A

1.02 Ac.
J. J. J. J. J.

4.56A
J. M. Ribick
532-551

J. L. S. C. J. S. C.

223-38
140
223-344
D. Carver

10A
A. Czacherski

229-378
229-263
7.62 A
H. Smith

12.26 A
A. Loveland

221-84
4A
A. G. Hurd

315-36
9.63A

20.82 A

221-84
4A
A. G. Hurd

187-410
47.24 A

524-896

426-1028
27.57 A

187-410
47.24 A

129.91 A

1.02 Ac.
J. J. J. J. J.

4.56A
J. M. Ribick
532-551

J. L. S. C. J. S. C.

223-38
140
223-344
D. Carver

10A
A. Czacherski

229-378
229-263
7.62 A
H. Smith

12.26 A
A. Loveland

221-84
4A
A. G. Hurd

315-36
9.63A

20.82 A

221-84
4A
A. G. Hurd

187-410
47.24 A

524-896

426-1028
27.57 A

187-410
47.24 A

129.91 A

1.02 Ac.
J. J. J. J. J.

4.56A
J. M. Ribick
532-551

J. L. S. C. J. S. C.

223-38
140
223-344
D. Carver

10A
A. Czacherski

229-378
229-263
7.62 A
H. Smith

12.26 A
A. Loveland

221-84
4A
A. G. Hurd

315-36
9.63A

20.82 A

221-84
4A
A. G. Hurd

187-410
47.24 A

524-896

426-1028
27.57 A

187-410
47.24 A

129.91 A

1.02 Ac.
J. J. J. J. J.

4.56A
J. M. Ribick
532-551

J. L. S. C. J. S. C.

223-38
140
223-344
D. Carver

10A
A. Czacherski

229-378
229-263
7.62 A
H. Smith

12.26 A
A. Loveland

221-84
4A
A. G. Hurd

315-36
9.63A

20.82 A

221-84
4A
A. G. Hurd

187-410
47.24 A

524-896

426-1028
27.57 A

187-410
47.24 A

129.91 A

1.02 Ac.
J. J. J. J. J.

4.56A
J. M. Ribick
532-551

J. L. S. C. J. S. C.

223-38
140
223-344
D. Carver

10A
A. Czacherski

229-378
229-263
7.62 A
H. Smith

12.26 A
A. Loveland

221-84
4A
A. G. Hurd

315-36
9.63A

20.82 A

221-84
4A
A. G. Hurd

187-410
47.24 A

524-896

426-1028
27.57 A

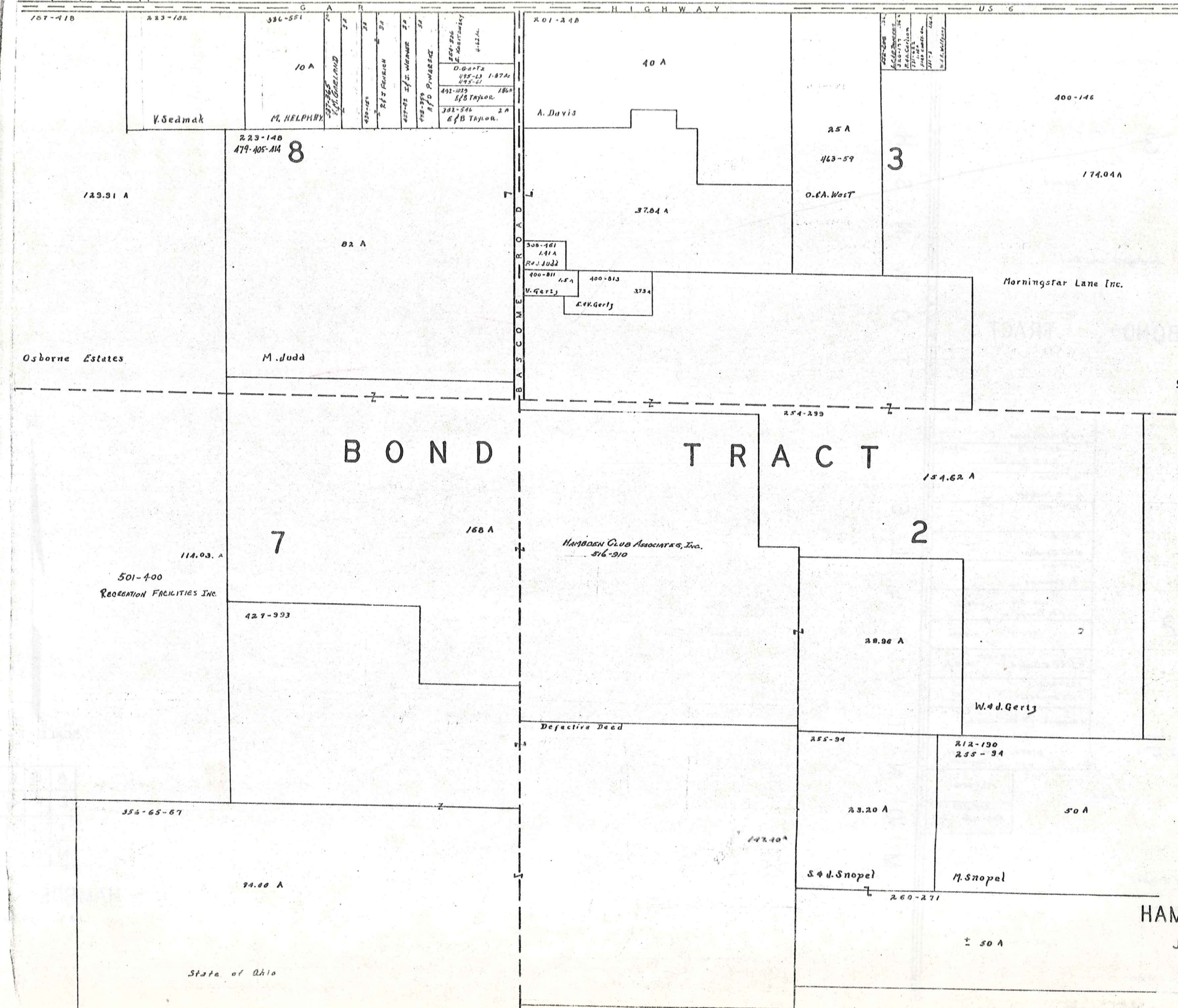
187-410
47.24 A

129.91 A

1.02 Ac.
J. J. J. J. J.

4.56A
J. M. Ribick
532-551

J. L. S. C. J. S. C.



SCALE 1" = 300'

A	B	C	D
E	F	G	H
I	J	K	L
M	N	O	P

HAMB DEN TWP.
JAN 1978

400-146

3

174.04 A.

Morningstar Lane Inc.

BOND TRACT

R O A D
T O W N S H I P
L E
K I L L E
V I L L E
M O N T V I L L E

572-811 5A.

L. J. D. PENNERMAN
430-352 4.98 A.
R. J. B. Grant

251-222
L. J. M. Lackner 7
257-143

263-201
M. W. Gardini
259-219
R. Kavardis

460-398 4.98 Ac.
M. H. Tomosin 7
460-480 4.98 Ac.

552-521
G. D. & C. K. SKECEIST 4.98 Ac.

424-826
A. M. Burnett

H. Berganski 477-502 4.98 Ac.

212-190
255-74

5.187 Ac. C. W. Ballash
486-502 2

50 A.

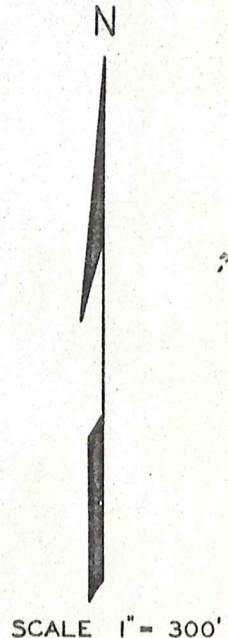
3.027 Ac.
537-253
C. ABLO, CO., (INC)
3.03A

M. Snopel

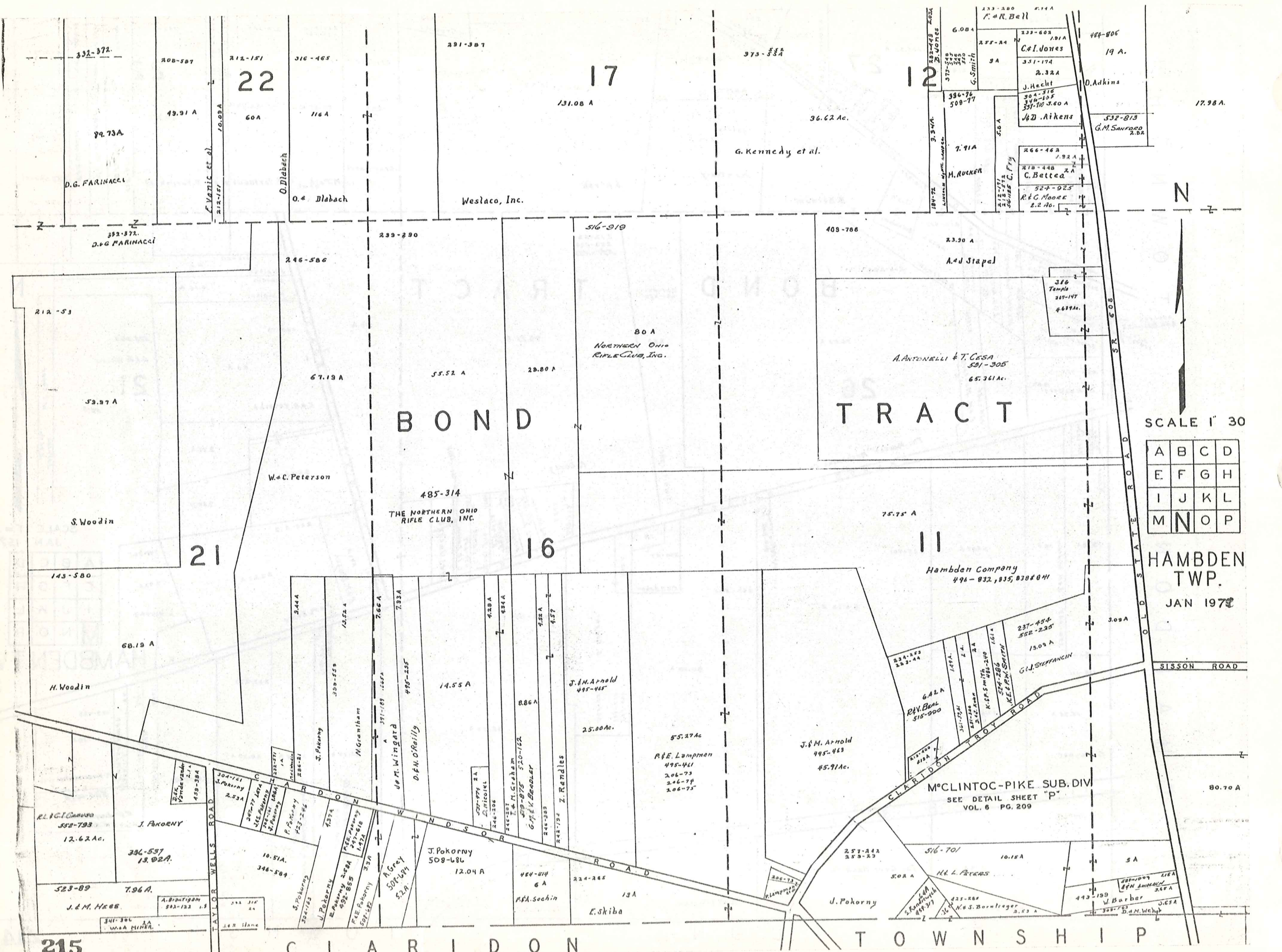
260-271

50 A.

S. J. Snopel



A	B	C	D
E	F	G	H
I	J	K	L
M	N	O	P



A	B	C	D
E	F	G	H
I	J	K	L
M	N	O	P

22

17

12

21

16

11

215

CLARIDON

TOWNSHIP

BOND

TRACT

THE NORTHERN OHIO RIFLE CLUB, INC.

Hambden Company

M^cCLINTOC-PIKE SUB. DIV
SEE DETAIL SHEET "P"
VOL. 6 PG. 209

D.G. FARINACCI

Weslaco, Inc.

G. Kennedy et al.

W.C. Peterson

S. Woodin

H. Woodin

J. Pokorny

J.M. Arnold

J.M. Arnold

G.J. STEFFANICH

R.F.A. Sochin

J. Pokorny

W. Barber

D.M. Welch

E. Skiba

W. Barber

D.M. Welch

J. Pokorny

J. Pokorny

J. Pokorny

J. Pokorny

J. Pokorny

J. Pokorny

J. Pokorny

J. Pokorny

J. Pokorny

J. Pokorny

J. Pokorny

J. Pokorny

J. Pokorny

J. Pokorny

J. Pokorny

J. Pokorny

J. Pokorny

J. Pokorny

J. Pokorny

J. Pokorny

J. Pokorny

J. Pokorny

J. Pokorny

J. Pokorny

J. Pokorny

J. Pokorny

J. Pokorny

J. Pokorny

J. Pokorny

J. Pokorny

J. Pokorny

J. Pokorny

J. Pokorny

J. Pokorny

J. Pokorny

J. Pokorny

J. Pokorny

J. Pokorny

J. Pokorny

J. Pokorny

J. Pokorny

J. Pokorny

J. Pokorny

J. Pokorny

J. Pokorny

J. Pokorny

J. Pokorny

J. Pokorny

J. Pokorny

J. Pokorny

J. Pokorny

J. Pokorny

J. Pokorny

J. Pokorny

J. Pokorny

J. Pokorny

J. Pokorny

J. Pokorny

J. Pokorny

J. Pokorny

J. Pokorny

J. Pokorny

J. Pokorny

J. Pokorny

J. Pokorny

J. Pokorny

J. Pokorny

J. Pokorny

J. Pokorny

J. Pokorny

J. Pokorny

J. Pokorny

J. Pokorny

J. Pokorny

J. Pokorny

J. Pokorny

J. Pokorny

J. Pokorny

J. Pokorny

J. Pokorny

J. Pokorny

J. Pokorny

J. Pokorny

J. Pokorny

J. Pokorny

J. Pokorny

J. Pokorny

J. Pokorny

J. Pokorny

J. Pokorny

J. Pokorny

J. Pokorny

J. Pokorny

J. Pokorny

J. Pokorny

J. Pokorny

J. Pokorny

J. Pokorny

J. Pokorny

J. Pokorny

J. Pokorny

J. Pokorny

J. Pokorny

J. Pokorny

J. Pokorny

J. Pokorny

J. Pokorny

J. Pokorny

J. Pokorny

J. Pokorny

J. Pokorny

J. Pokorny

J. Pokorny

J. Pokorny

J. Pokorny

J. Pokorny

J. Pokorny

J. Pokorny

J. Pokorny

J. Pokorny

J. Pokorny

J. Pokorny

J. Pokorny

J. Pokorny

J. Pokorny

J. Pokorny

J. Pokorny

J. Pokorny

J. Pokorny

J. Pokorny

J. Pokorny

J. Pokorny

J. Pokorny

J. Pokorny

J. Pokorny

J. Pokorny

J. Pokorny

J. Pokorny

J. Pokorny

J. Pokorny

J. Pokorny

J. Pokorny

J. Pokorny

J. Pokorny

J. Pokorny

J. Pokorny

J. Pokorny

J. Pokorny

J. Pokorny

J. Pokorny

J. Pokorny

J. Pokorny

J. Pokorny

J. Pokorny

J. Pokorny

J. Pokorny

J. Pokorny

J. Pokorny

J. Pokorny

J. Pokorny

J. Pokorny

J. Pokorny

J. Pokorny

J. Pokorny

J. Pokorny

J. Pokorny

J. Pokorny

J. Pokorny

J. Pokorny

J. Pokorny

J. Pokorny

J. Pokorny

J. Pokorny

J. Pokorny

J. Pokorny

J. Pokorny

J. Pokorny

J. Pokorny

J. Pokorny

J. Pokorny

J. Pokorny

J. Pokorny

J. Pokorny

J. Pokorny

J. Pokorny

J. Pokorny

J. Pokorny

J. Pokorny

J. Pokorny

J. Pokorny

J. Pokorny

J. Pokorny

J. Pokorny

J. Pokorny

J. Pokorny

J. Pokorny

J. Pokorny

J. Pokorny

J. Pokorny

J. Pokorny

J. Pokorny

J. Pokorny

J. Pokorny

J. Pokorny

J. Pokorny

J. Pokorny

J. Pokorny

J. Pokorny

J. Pokorny

J. Pokorny

J. Pokorny

J. Pokorny

J. Pokorny

J. Pokorny

J. Pokorny

J. Pokorny

J. Pokorny

J. Pokorny

J. Pokorny

J. Pokorny

J. Pokorny

J. Pokorny

J. Pokorny

J. Pokorny

J. Pokorny

J. Pokorny

J. Pokorny

J. Pokorny

J. Pokorny

J. Pokorny

J. Pokorny

J. Pokorny

J. Pokorny

J. Pokorny

J. Pokorny

J. Pokorny

J. Pokorny

J. Pokorny

J. Pokorny

J. Pokorny

J. Pokorny

J. Pokorny

J. Pokorny

J. Pokorny

J. Pokorny

J. Pokorny

J. Pokorny

J. Pokorny

J. Pokorny

J. Pokorny

J. Pokorny

J. Pokorny

J. Pokorny

J. Pokorny

J. Pokorny

J. Pokorny

J. Pokorny

J. Pokorny

J. Pokorny

J. Pokorny

J. Pokorny

J. Pokorny

J. Pokorny

J. Pokorny

J. Pokorny

J. Pokorny

J. Pokorny

J. Pokorny

J. Pokorny

J. Pokorny

J. Pokorny

J. Pokorny

J. Pokorny

J. Pokorny

J. Pokorny

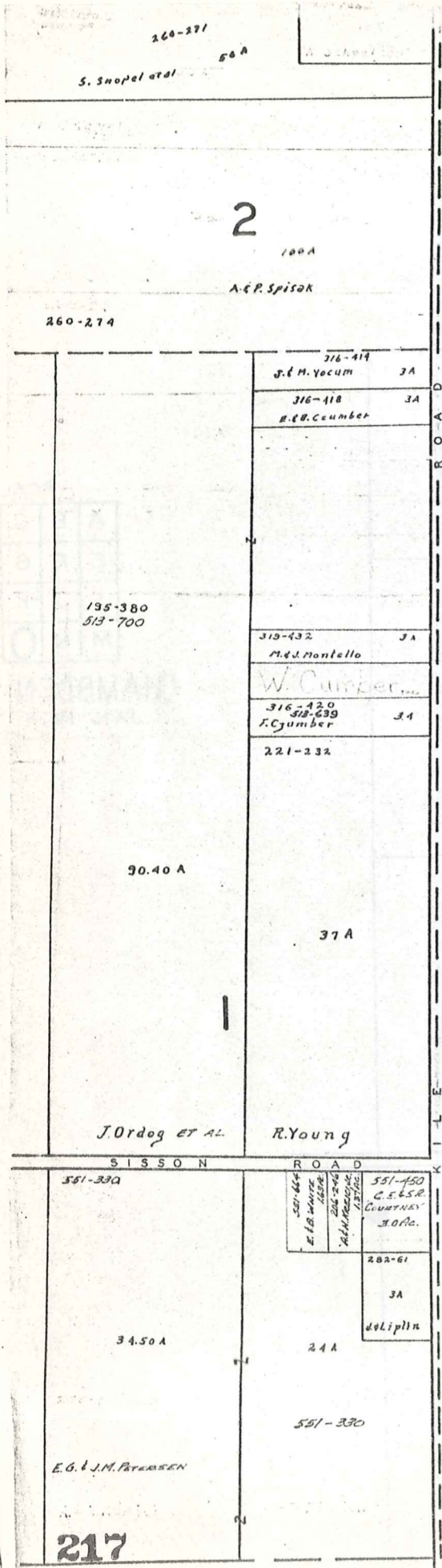
J. Pokorny

J. Pokorny

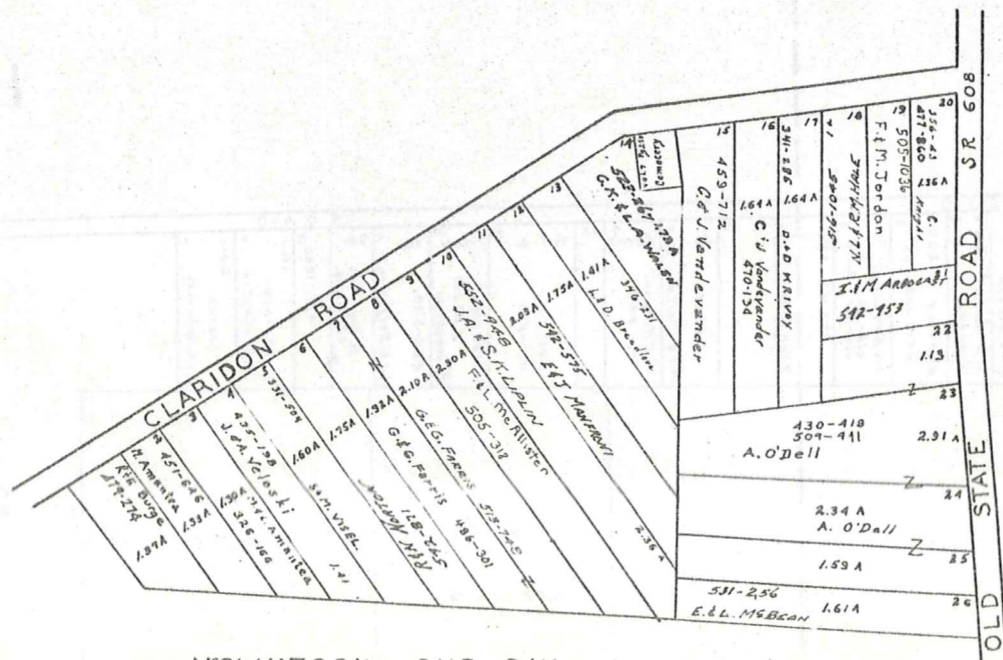
J. Pokorny

J. Pokorny

J. Pokorny



MONTVILLE TOWNSHIP



McCLINTOCK SUB. DIV.
 VOL. 6 PG. 209
 LOT 6 & 11 BOND TR.
 Scale 1"=200'



SCALE 1" = 300'
 JAN 1973

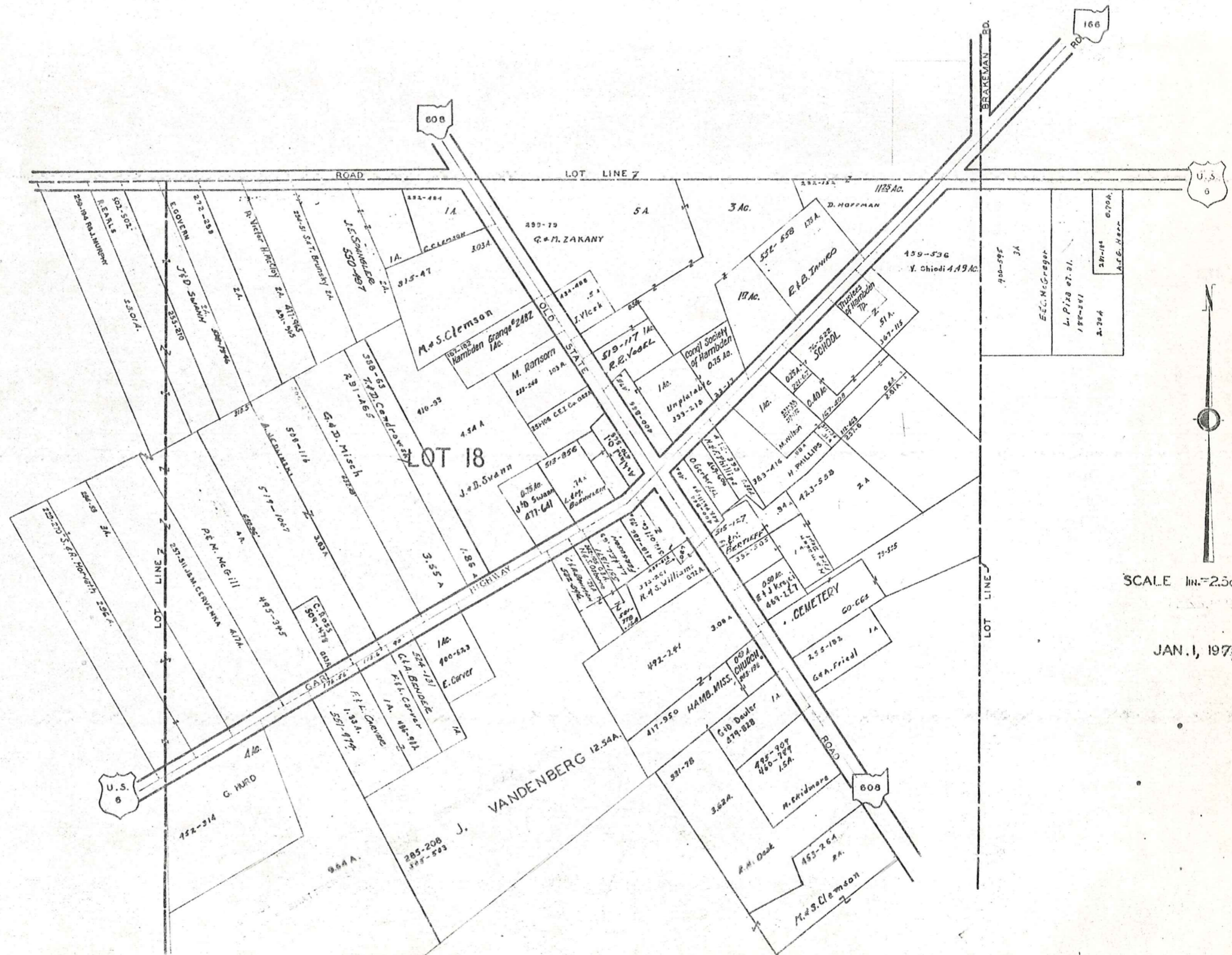
A	B	C	D
E	F	G	H
I	J	K	L
M	N	O	P

HAMB DEN TWP.

HAMB DEN CENTER
AND VICINITY

HAMB DEN TP.

HAMB DEN CENTER
AND VICINITY

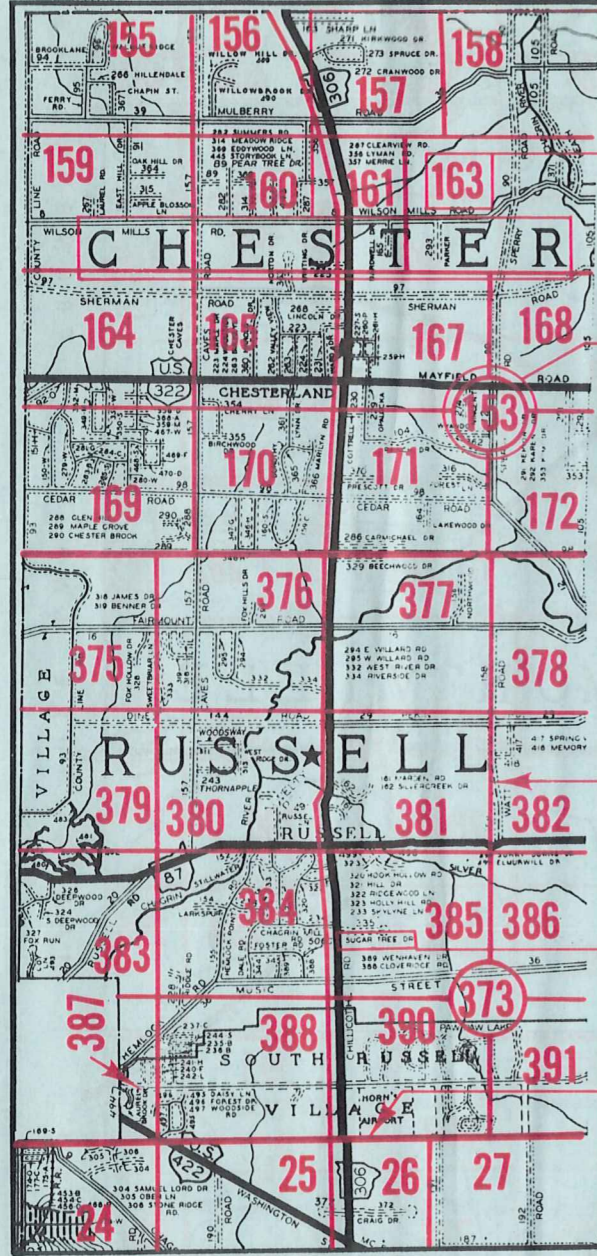


SCALE 1 in. = 2.5 ch. or 160 ft.

JAN. 1, 1973

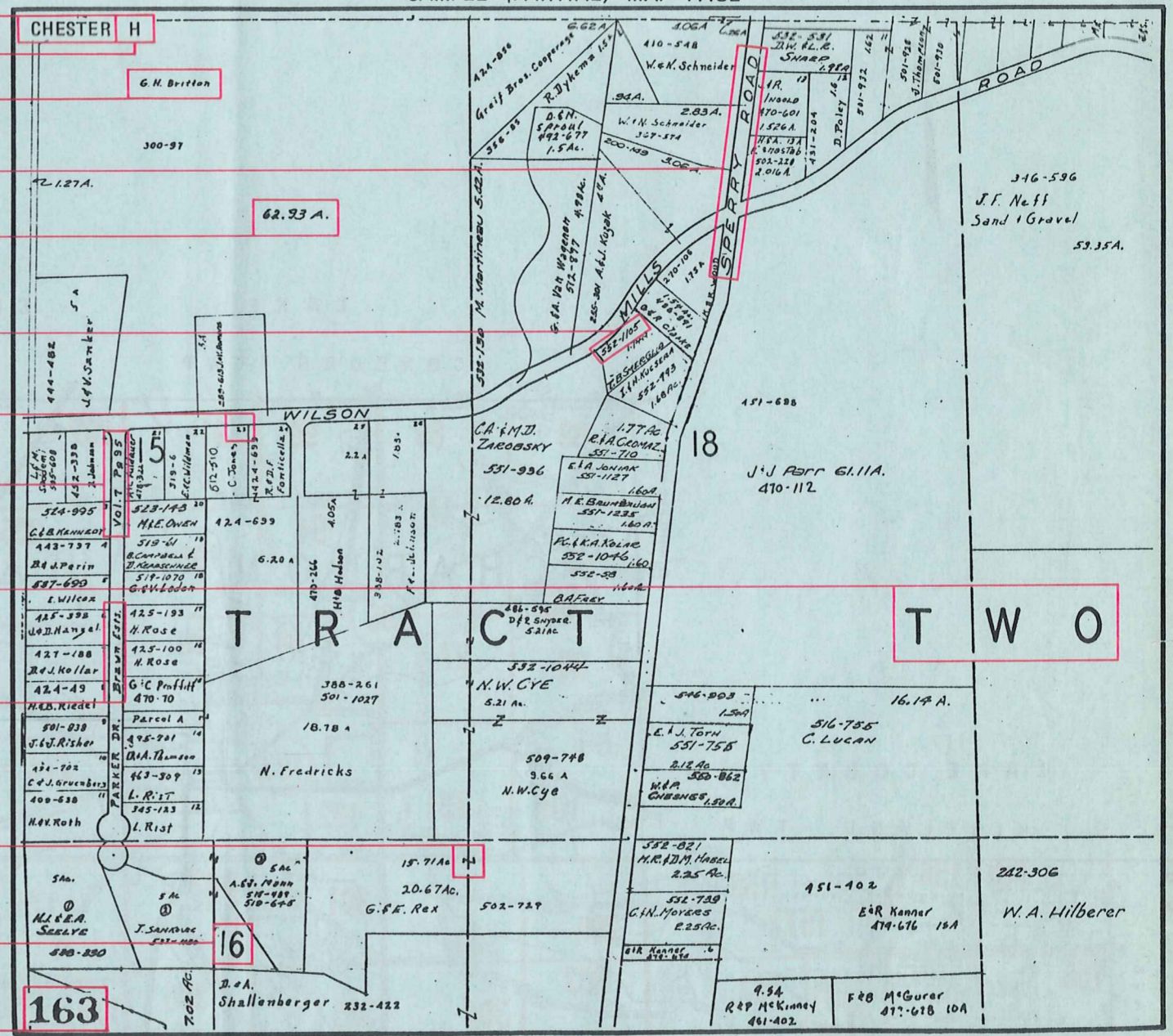
Explanation and Use Sheet for Geauga County, Ohio

SAMPLE (PARTIAL) COUNTY INDEX MAP



- Township Name
- Map Page Number (Or Letter)
- Owners Name
- Street Name
- Acreage
- Municipality Index Beginning Atlas Page Number
- Deed Book & Page
- Subdivision Lot Number
- Plat Book & Page
- Tract Number
- Atlas Page Boundary
- Subdivision Name
- Street Name
- Denotes Continuous Ownership
- Municipality Index Atlas Page Boundary
- Tract Lot Number
- Atlas Page Number

SAMPLE (PARTIAL) MAP PAGE



USE OF THE MAP VOLUME

1. LOCATE THE GENERAL AREA OF INTEREST ON THE COUNTY INDEX MAP, ATLAS PAGE 'B'.
2. **A. IF PROPERTY IS IN A TOWNSHIP**, NOTE THE ATLAS PAGE NUMBER. TURN TO THE PAGE INDICATED AND LOCATE SPECIFIC PARCEL OF INTEREST.
NOTE: ON SOME MAPS YOU MAY BE REFERRED TO A DETAIL SHEET SHOWING AN ENLARGEMENT OF THE AREA. THESE MAPS ARE FOUND AT THE END OF THE REGULAR MAP PAGES IN EACH TOWNSHIP EITHER IN ALPHABETICAL OR NUMERICAL SEQUENCE.
3. **B. IF PROPERTY IS IN A MUNICIPALITY**, REFER TO THE TABLE OF CONTENTS, ATLAS PAGE 'C', AND NOTE THE BEGINNING ATLAS PAGE NUMBER FOR THE MUNICIPALITY OF INTEREST.
 - (1) TURN TO THE PAGE INDICATED. ON THIS PAGE WILL APPEAR AN INDEX MAP FOR THAT MUNICIPALITY.
 - (2) LOCATE SPECIFIC AREA OF INTEREST AND NOTE THE MAP PAGE NUMBER.
NOTE: DO NOT CONFUSE THE MAP PAGE NUMBER WITH THE ATLAS PAGE NUMBER IN THESE MUNICIPALITIES.
 - (3) FOLLOW EITHER ALPHABETICAL OR NUMERICAL SEQUENCE TO THE MAP PAGE INDICATED AND LOCATE SPECIFIC PARCEL OF INTEREST.